

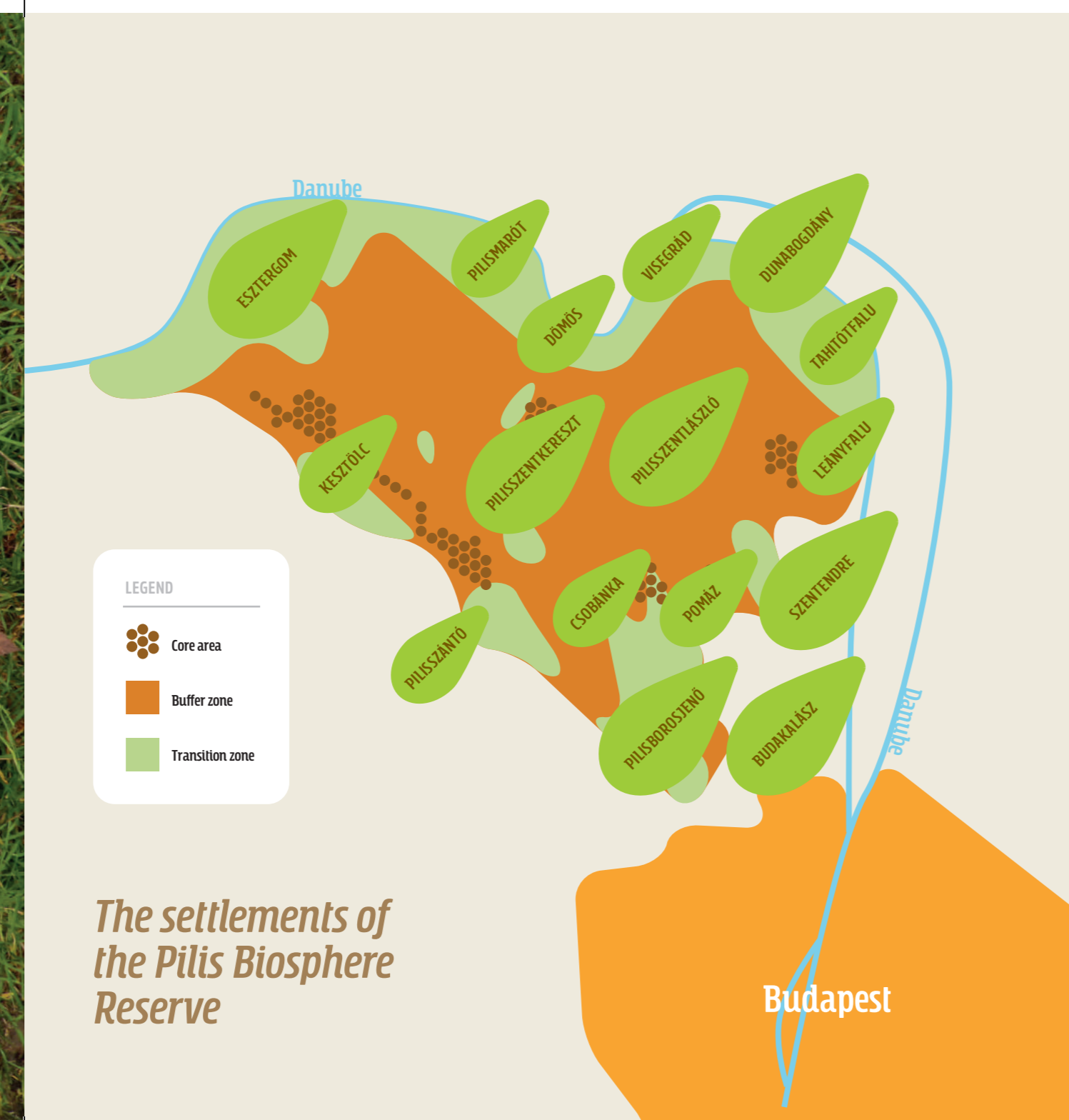


**IMPRINT**

Author: Dr. Kézdy Pál  
 Editor: Sz. Mosoni Dóra  
 Design and print: Arista Labor Kft.

Published by Duna-Ipoly Nemzeti Park Igazgatóság and Pilis Parkerdő Zrt.  
 Publishing Officer: Fűri András  
 Budapest, 2019

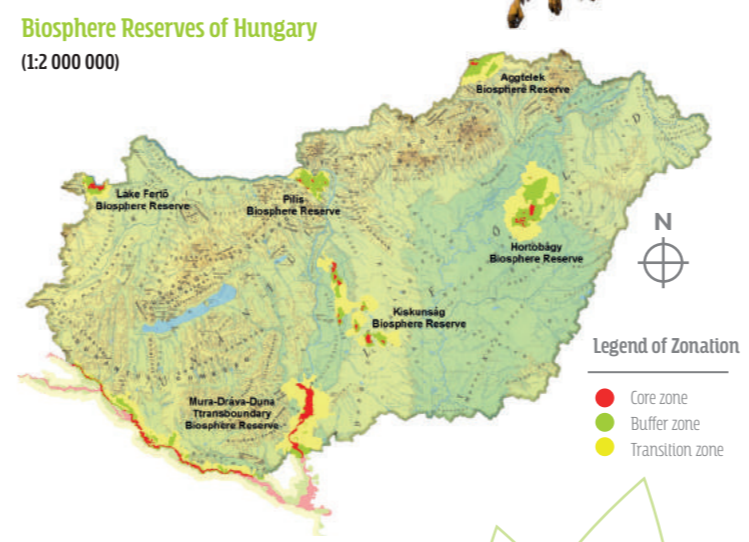
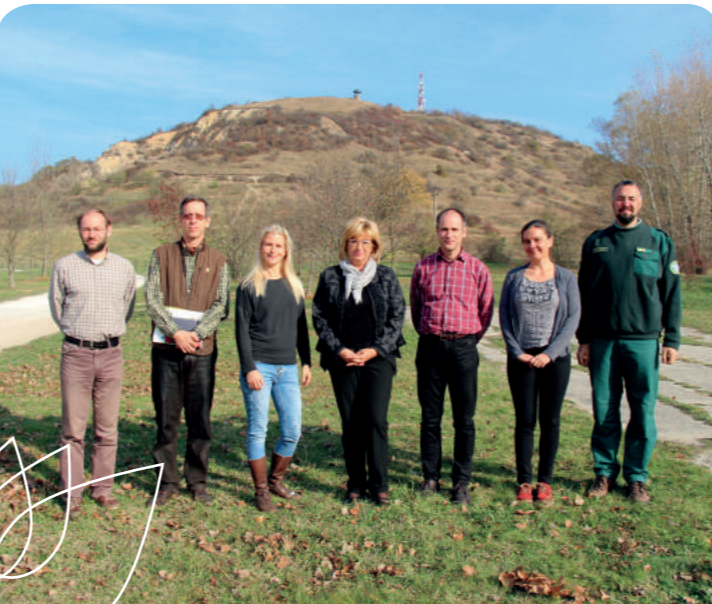
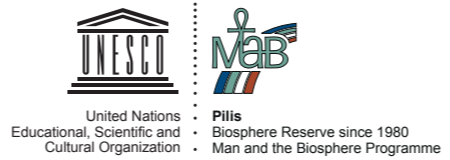
www.dunaipoly.hu  
 www.parkerdo.hu



*The settlements of  
 the Pilis Biosphere  
 Reserve*

**THE FORUM FOR THE PILIS BIOSPHERE**

- is convened once a year;
- Its members are farmers, state-owned- and non-governmental nature reservation organizations, the mayors of the 16 affected settlements, touristic organizations and education institutes operating on the territory of the Pilis Biosphere Reserve;
- promotes education of local residents in terms of the objectives of the Pilis Biosphere Reserve;
- provides opportunities to exchange and harmonize opinions and interests of residents of the Pilis Biosphere Reserve;
- provides a scientific basis for the management of Pilis Biosphere Reserve;



**ADVISORY BODY OF THE FORUM FOR THE PILIS BIOSPHERE**

- Members of the Advisory Body elected by the Forum:
- The Chairman of MAB National Committee – permanent member
  - Representative of the Directorate of Duna-Ipoly National Park – permanent member
  - Representative of the State Forest Management – permanent member
  - Representative of mayors – annually elected member
  - Representative of local non-government organizations – annually elected member
  - Representative of local private farmers – annually elected member



**Cultural values**

The Castle of Visegrad in the Danube hug.

The Pilis Biosphere Reserve is surrounded by the Danube breaking through the Carpathian Mountains and turning to the South, calling for the name **Danube Bend**. The medieval towns around Budapest and the villages hiding in the forests make this region one of the most beautiful and touristic one in Hungary. One of the

two largest cities of the area, Esztergom is where King St. Stephen was born and crowned, serving as the center of the Hungarian Catholic Church. The other one, **Visegrád** was the seat of the Hungarian kings, hosting the famous Meeting of Kings in 1335 with the kings of Hungary, the Kingdom of Bohemia and Poland.

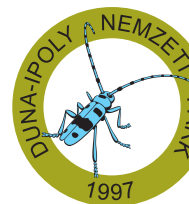


The ruins of the roman-style monastery and subchurch built in the 12th century make Dömös a special touristic destination.

## Natural values

The Pilis Biosphere Reserve is where the volcanic andesite hills of the Carpathian Mountains meet the sedimentary dolomite- and limestone mountain ranges. This is also the source of diversity of the flora, being home to species native to the Carpathian and South-European regions.

The territories the biosphere reserve are also part of the Duna-Ípoly National Park and the Natura 2000 network.



The flower of the Carpathian is the **Purple hellebore** (*Helleborus purpurascens*), while the limestone rocks nurture **Greater pasque flower** (*Pulsatilla grandis*).

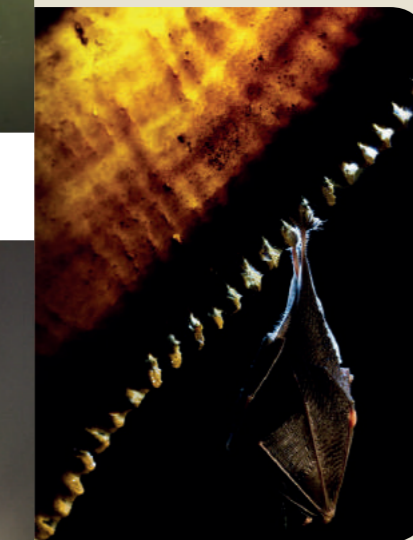


**Peregrine falcons** (*Falco peregrinus*) nest on the mountaintops, and the rare hunter of the forest is the **Short-toed snake eagle** (*Circaetus gallicus*).



Under the limestone ranges, more than 300 caves have been discovered so far.

The 7.4 km long **Ariadne Cave System** accommodates Transdanubia's largest caverns and dripstones.



## Tourism and education

The medieval Danube Bend settlements near Budapest and the mountains sheltering them belong to the most popular tourist destinations of Hungary. In cooperation with volunteers, the staff of the Pilis Biosphere Reserve annually assesses the number of visits to these mountains, which shows that on a nice, autumn weekend, more than 17,000 tourists choose to walk along the paths. In these towns, festivals and several events await visitors.



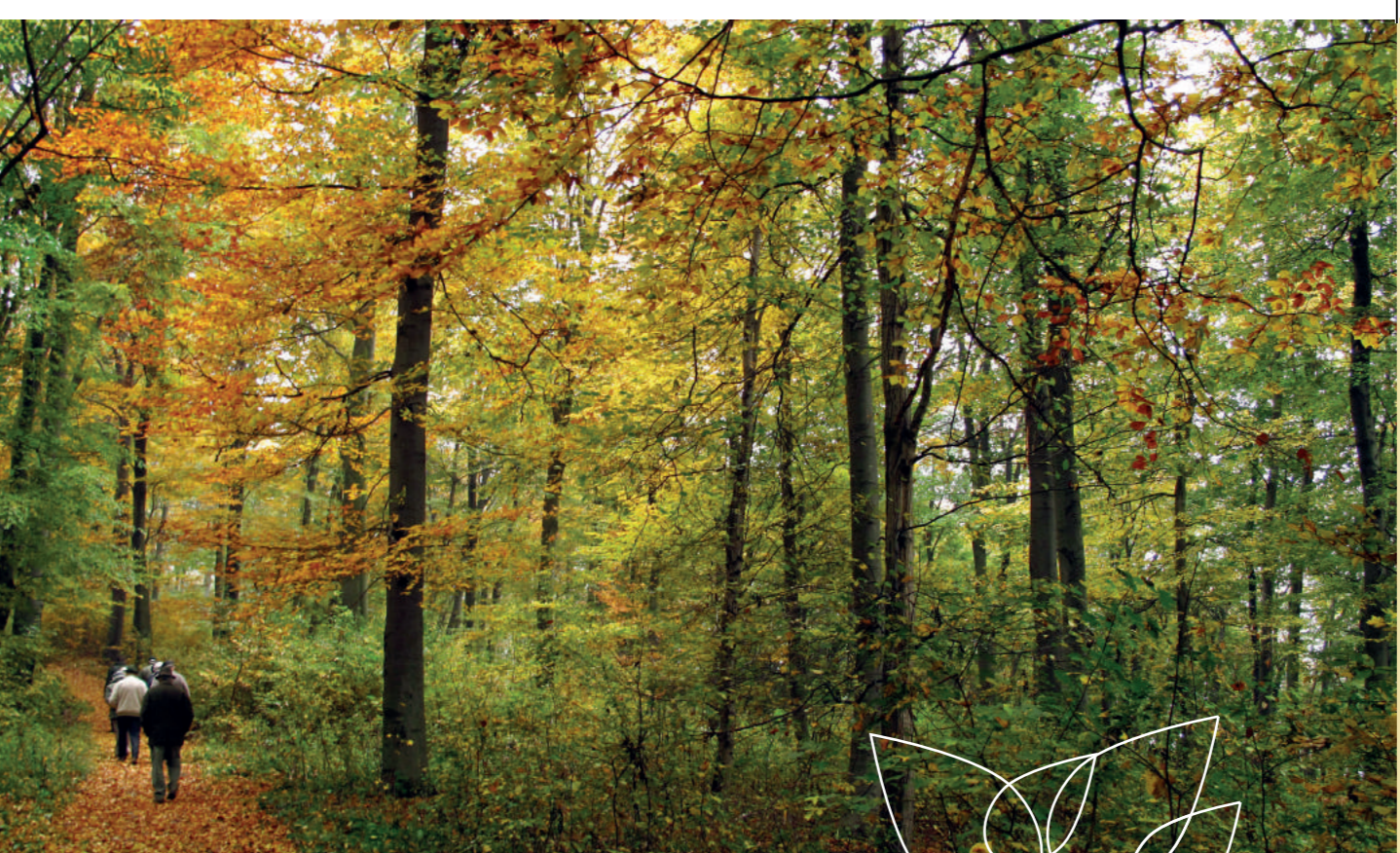
In September, at the **Dömös Family Day**, the traditional event hosted by the national park, animal shows and educational sessions about nature await families.



At the Dömös Family Day sold the cheese, honeys, ceramics and wooden toys made by **local farmers**.



The **Nature School** located above Visegrád was founded in 1988. Each year, 8000 children are educated here about nature, within the framework of a several days long session. These days, the children of the first students of this nature school are coming back for a camping.



## Close-to-Nature Forestry

The forests are managed by the 50-year-old **Pilisi Parkerdő Zrt.** The founders aimed to realize a forest management model that emphasizes the touristic and cultural roles played and considers the protection of the landscape and nature as a priority.

Precisely this is why our forestry is in the lead in large-scale implementation of close-to-nature forestry in Hungary. Thanks to this method, the forest's scenic characteristics will not be damaged. Interventions will be almost unnoticeable to outsiders.

Close-to-nature forests are forests consisting of conifers and deciduous trees of various ages, where the oldest trees are functioning as important habitats, and where dead trunks and the continuous maintenance of the forest climate also play significant roles.

The forests of Pilis are in the top hiking destinations of the country. A 1000 km long hiking trail, a 350 km bicycle trail, forest schools, lookout towers and chalets serve hikers' convenience.



Boldog Őzseb lookout tower



**PILIS  
BIOSPHERE  
RESERVE**